

USING EXTENDED RULER ATTACHMENT (TP-ERA) ON DRAWER



1 For fast repeatability use the Extended Ruler Attachment



2 Align each ruler at the 5" mark to extend the length of ruler to 17"



3 Measure drawer width



4 Set small end stop to half the drawer width



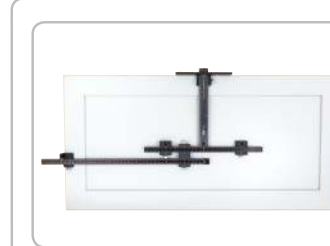
5 Now you are ready to drill an entire drawer bank



6 Perfectly placed



7 Everytime



If your handle pattern interferes with double bracket move below t-square and connect the 0" ruler at the 2" mark as pictured above

LARGE HANDLE ON WIDE DRAWER FRONT



1 We demonstrate a method to center a long pull on a Drawer - line up center of one hole with edge of Drawer



2 Measure from left of drawer to center of left hole on hardware. Use half this to set for the sliding stop end on the era



3 Mark selected drill bushing with tape on extension (included in TP-2312, TP-1935)



4 Adjust end stop at desired distance from the marked bushing



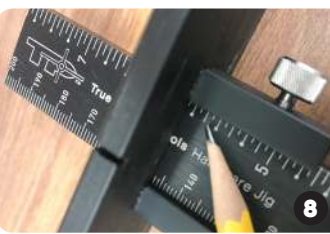
5 Lay the pull on the jig align with taped hole



6 Now mark the other hole with tape



7 Measure height of drawer use half that number for center



8 Set the Large Stop and tighten at desired location



9 Hold stops firm against top and left side of drawer and drill your holes



10



Long hardware installed



TRUE POSITION TOOLS

A guide to using True Position Tools Hardware Jigs

- Always secure sliding guides and stops in position and tighten before drilling.
- Be sure to wear proper safety gear when using power tools
- Make sure hands are out of the way when drilling



See more

www.truepositiontools.com

KNOB ON DOOR INSTALLATION



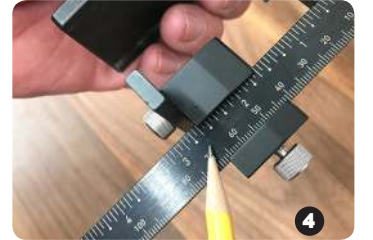
1 Place hardware to find the position you like



2 Measure from bottom mark position with pencil



3 Measure from side



4 Match the sliding end stop with your bottom measurement and tighten



5 Match Large Stop to your side measurement and tighten



6 Position tool with stops as shown and drill hole through drill bushing

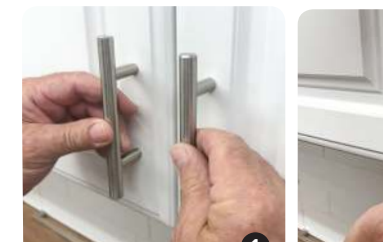


7 Reverse tool position onto opposite door and drill

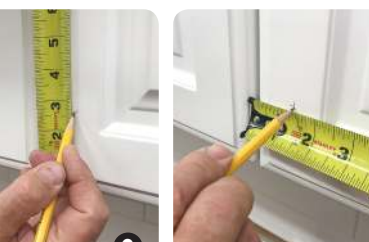
SCAN FOR WEB INSTRUCTIONS



HANDLE ON DOOR INSTALLATION



1 Place hardware to find position you like



2 Measure from bottom mark position with pencil

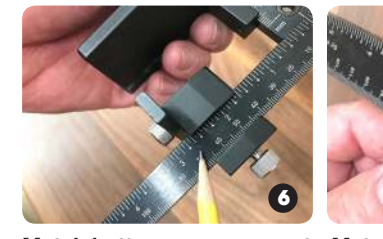


3 Measure from side

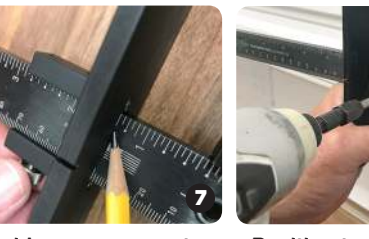


4 Measure hole centers of your hardware

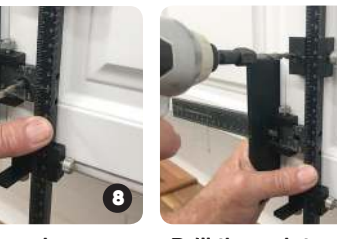
5 Transfer your hardware measurement to the sliding drill bushing and tighten



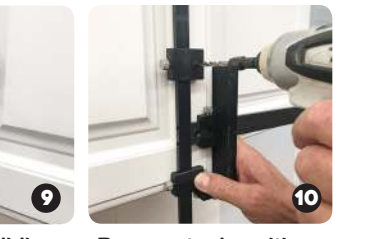
6 Match bottom measurement with sliding end stop and tighten.



7 Match side measurement to Large Stop and tighten



8 Position tool as shown drill through fixed center bushing for bottom hole



9 Drill through top sliding bushing for top hole

10 Reverse tool position onto opposite door and drill holes

DRILLING HINGE HOLES



Mark center of two hinge holes



Set stop collar to drill depth



Tighten drill stop collar



Slide two drill bushings side by side lining up center line with your mark



Setting two blocks together produce industry standard 32mm spacing



Drill top hinge holes



and bottom holes

KNOB ON DRAWER FRONT



Measure width to find center



Mark center top of drawer



Measure side of drawer for center. Position hardware where you like



Slide Large Stop to match side measurement



Line up notch on center of Large Stop with center mark at top of drawer then push tool flush against drawer face.



Drill hole using fixed center drill bushing

LINE BORING FOR SHELF PINS



Measure and mark desired location



Join tp-2312 and tp-era to tp-1934 adjust to desired length and tighten



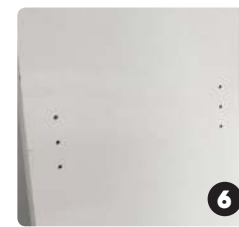
Mark your holes with tape for reference



Drill front holes



Remove Large Stop and press thumb screws against back panel then drill



Perfectly spaced every time

SCAN FOR WEB INSTRUCTIONS



SEE MORE AT WWW.TRUEPOSITIONTOOLS.COM

Manufacturers Limited One Year Warranty:

True Position Tools makes every effort to assure that its products meet high quality and durability standards. We warrant to the original purchaser that this product is free from defects in material and workmanship for the period of 1 year from the date of purchase. This warranty does not apply to damage due directly or indirectly to alteration, misuse, abuse, negligence or accidental, or repairs outside our facilities, lack of maintenance, or normal wear and tear. We shall in no event be liable for death, injuries to persons or property, or for incidental, contingent, special or consequential damages arising from the use of our product. Some states do not allow the exclusion or limitation of incidental or consequential damages. So the above limitations may not apply to you.

To take advantage of this warranty, the product or part must be returned to us with the transportation charges prepaid. Proof of purchase date and an explanation of the complaint must accompany the merchandise. If our inspection verifies the defect, we will either repair or replace the product at our election. We will return repaired products at our expense, but if we determine there is no defect, or that the defect resulted from causes not within the scope of our warranty, then you must bear the cost of returning the product. Subject to proof of purchase. Only available to original owner. This warranty gives you specific legal rights and you may also have other rights which vary from state to state.

Bushing Limited Lifetime Warranty:

Our bushings are warranted for the life of the product and available only to the original purchaser. True Position Tools will offer standard replacement bushings for its products. Upon RMA, replacement bushings will be sent to the reseller whom the product was purchased from or in approved cases, directly to the customer. Upon RMA, True Position Tools may insert the bushings for the customer in special circumstances, freight will be paid by the customer. This warranty does not apply to damage due directly or indirectly to alteration, misuse, abuse, negligence or accidental, or repairs outside our facilities, lack of maintenance. Subject to proof of purchase. Some states do not allow the exclusion or limitation of incidental or consequential damages. So the above limitations may not apply to you.

HANDLE ON DRAWER FRONT

*Use this method if you do not have TP-ERA.



Measure your hardware



slide two drill bushings onto the tp-1934 Using the same measurements



tighten sliding bushings into position cover the center bushing with tape

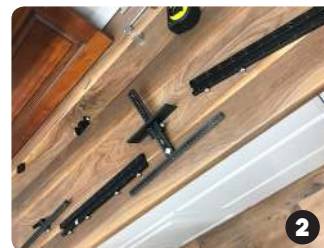


Center on drawer and drill holes

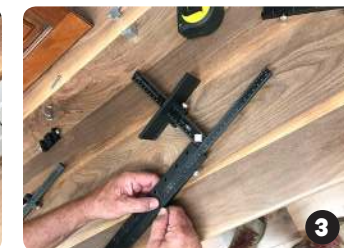
LARGE HANDLE ON TALL DOORS



Measure hardware hole spacing



Use TP-1934 with long hardware/shelf pin extension and the TP-ERA



Slide the shelf pin extension onto the tp-1934



Tighten thumb screws



Position hardware by hand to find where you like it and mark position of bottom hole



We are setting this one 3 1/2" from the bottom



And 1 3/8" from side edge



Set end stop at desired distance from center line of bushing



Set the sliding end stop 3 1/2" out on the era from bottom hole



Match the bottom hole on hardware to bottom hole on extension and mark with tape



Match top hole on hardware to matching hole on extension



Mark hole location with tape



Adjust Large Stop to 1 3/8" to match the measurement from side edge



Holding side and bottom stops against door drill bottom hole



And top hole



Reverse tool for opposite door and repeat